

Exhibit Name: Relationship between R-Record Flat Files
 Exhibit Number: 202-0
 Record Name:
 Record Code: ROE

Reinsurance Year: 2020
 Version: Approved
 Release Date: 7/1/2019

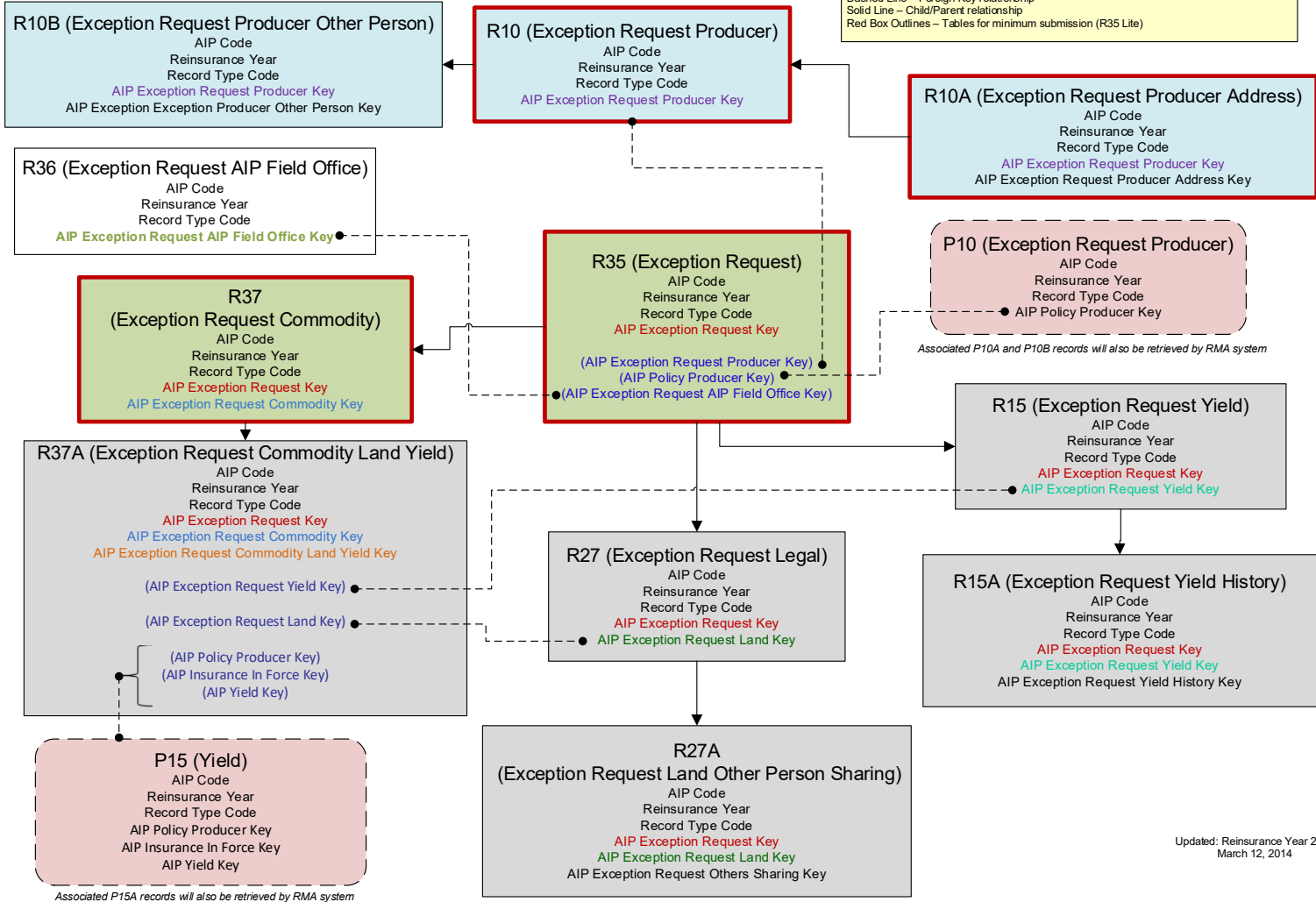
Flat Files for Initial Actuarial Change Request Submission

For 2015, submission of a R36, R35 and R37 are the minimum needed for electronic submission, if a P10 series record exists. If no P10 exists, then a R10 and R10A record would also be required.

LEGEND

Box
 Turquoise - Not required if corresponding P Record already submitted.
 Grey - Submission requirement set by WAH for WA request type (future implementation)
 Green - Unique to Exception Requests. Required for all WA request types
 White - Reference table
 Pink - PASS flat files

Lines
 Dashed Line - Foreign Key relationship
 Solid Line - Child/Parent relationship
 Red Box Outlines - Tables for minimum submission (R35 Lite)



Updated: Reinsurance Year 2015
 March 12, 2014