

Exhibit Name: Commodity Processing Flow Diagram
Exhibit Number: P11-2
Record Name: Acreage
Record Code: P11

Reinsurance Year: 2021
Version: Approved
Release Date: 7/1/2020

First Commodity Processing (Planted Acreage)

Multiple Cropping Code by Record
P11 Acreage PR = 65% Premium Reduction RP = Restore Premium
P21 Acreage Claim WI = Waive Insurance on 2 nd Commodity NS = Report No Insured 2 nd Commodity DC = Meets Double-Cropping Requirements IR = 65% Indemnity Reduction RI = Restore Indemnity FC = 100% Indemnity (2 nd Commodity Planted and no other code applies) SC = 100% Indemnity on 2 nd Commodity Planted SW = Waived Indemnity on 2 nd Commodity Planted

1st Insured Commodity Planted
 P11 (100% Premium)

1st Insured Commodity Planted
 No Loss

 P11 = No Change
 P21 = None

1st Commodity Planted Loss

Report No Insured
 2nd Commodity Planted

 P11 = No Change
 P21 = NS (100% Indemnity)

Waive Insurance on
 2nd Commodity Planted

 P11 = No Change
 P21 = WI (100% Indemnity)

Acreage Qualifies for Double
 Cropping

 P11 = No Change
 P21 = DC (100% Indemnity on
 Acreage Qualifying Under
 Double-Cropping Provisions)

2nd Commodity Planted
 (No Other Code Applies)

 P11 = No Change
 P21 = FC (100% Indemnity)

WI/DC Not Applicable (Insured
 2nd Commodity or 2nd
 Commodity Status Unknown)

 P11 = PR
 P21 = IR

No 2nd Commodity Will Be
 Planted, but Subsequently Have
 2nd Commodity Indemnity

 Revise 1st Commodity Planted:
 P11 = PR
 P21 = IR

No 2nd Commodity Indemnity

 Revise 1st Commodity Planted:
 P11 = RP
 P21 = RI

2nd Commodity Indemnity

 P11 = No Change
 P21 = No Change

Exhibit Name: Commodity Processing Flow Diagram
Exhibit Number: P11-2
Record Name: Acreage
Record Code: P11

Reinsurance Year: 2021
Version: Approved
Release Date: 7/1/2020

First Commodity Processing (Prevented Planted Acreage)

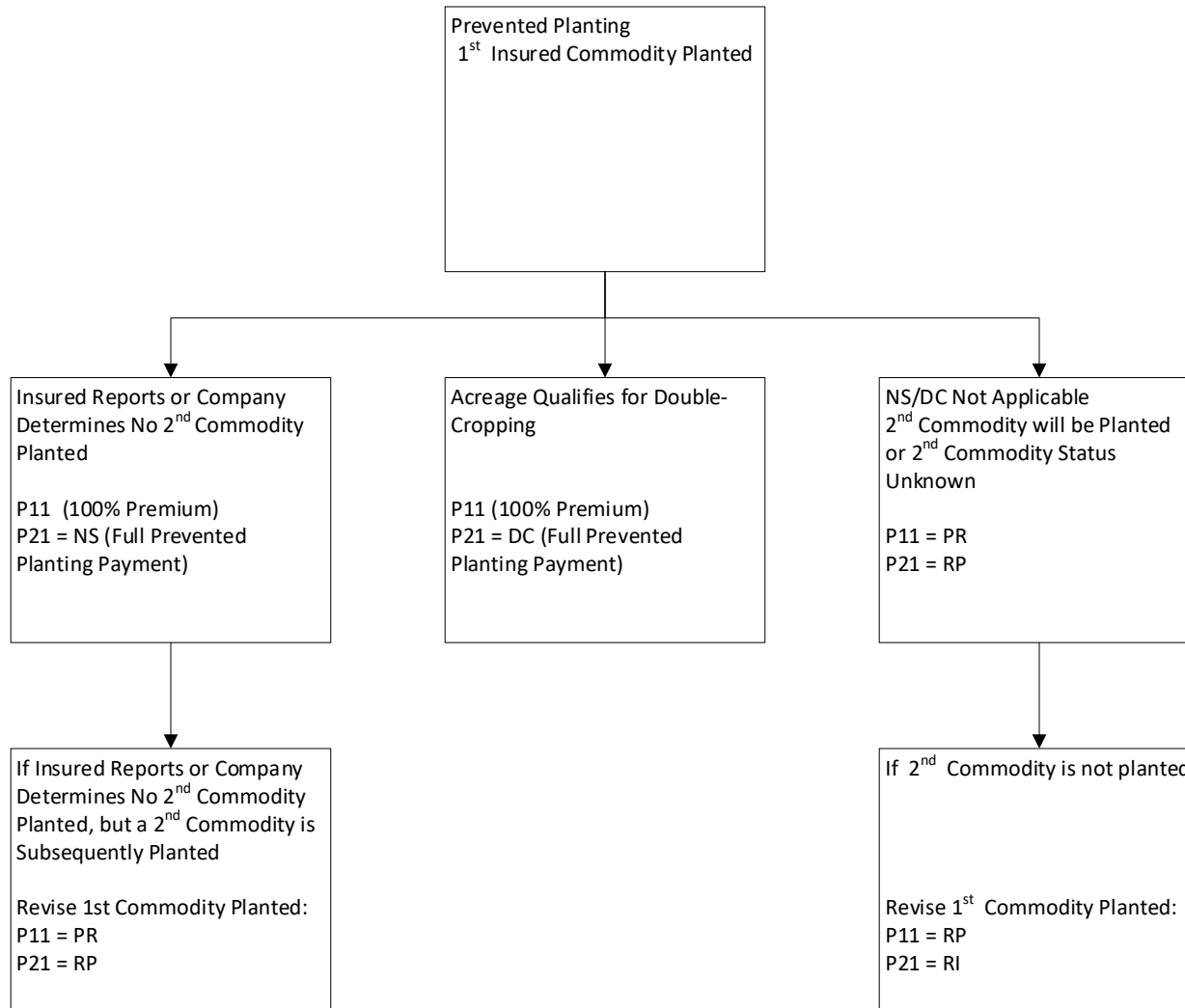


Exhibit Name: Commodity Processing Flow Diagram
Exhibit Number: P11-2
Record Name: Acreage
Record Code: P11

Reinsurance Year: 2021
Version: Approved
Release Date: 7/1/2020

Second Commodity Planted Processing (Planted Acreage)

